


The Veritas® Flush Plane is a multi-purpose tool for flush trimming of projections such as glue lines, laminate edges, plugs, etc. It is as handy on the job site as it is in the shop. It can also be used for cleaning out inside corners (e.g., hinge gains, tenons, half-laps).


 **Caution:** Be aware that the blade is sharp; careless handling can result in serious injury.

The handle is designed so that the blade easily reverses for safe storage and edge protection (see **Figure 1**). It can be carried in a pouch or pocket, or loosely stored in a toolbox without fear of damaging the blade edge.

A powerful 1" diameter rare-earth magnet holds the 2" wide blade in place. Thrust loads are taken by a steel pin molded into the body. The A2 tool steel blade, which comes with a 25° bevel angle, is readily removed for honing in the usual way.

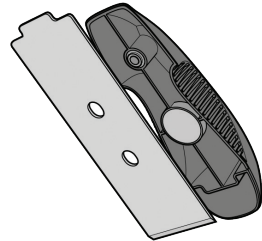
Because the powerful magnet ensures that the blade will not come off during use, it can also make blade removal difficult. The easiest and safest way is to grip the handle over the heel area, and hold the blade near the finger cut-outs. Twist the blade sideways to release it (see **Figure 2**).

When installing the blade, place it behind the heel and the steel pin (see **Figure 3**). Slide it forward until it snaps into place. Be careful to hold the blade by its sides (near the finger cut-outs) to avoid pinched fingers.

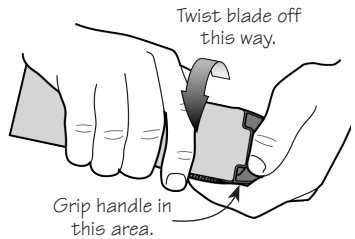
 **Caution:** Strong magnetic field. Keep away from all electronic equipment or other items that have information stored magnetically. Magnets can corrupt stored data if placed too near.

## Accessory

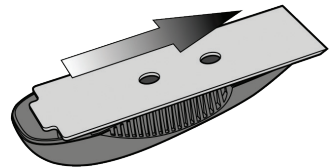
**05P20.02** A2 Tool Steel Replacement Blade



**Figure 1: Blade storage.**



**Figure 2: Blade removal.**



**Figure 3: Blade installation.**